

**Conceptualizing health in relation to
integration outcomes and processes:
contrasts and commonalities from
studies of forced migrants in the UK and
Sierra Leone**

Alastair Ager

19 February 2010

**CPRC Mini-Conference: Immigration/Migration
Research at Columbia**

Overview

- **How do issues of health relate – in the understandings of policy-makers, practitioners and migrants themselves – to broader conceptualizations of migrant processes and outcomes, such as ‘integration’?**
- **Illustrated through reflection on two very distinctive projects:**
 - **Indicators of Integration, UK Home Office, 2002-2004 (measuring policy and practice impact on integration of refugees settling in UK during ‘dispersal’ policy era)**
 - **SEFAFU, Christian Childrens Fund/Child Fund International, 2006-2008 (measuring project impact on process of reintegration of returning abductees following civil conflict in Sierra Leone)**
- **Common challenges:**
 - **conceptualization of (re)integration process**
 - **identification of appropriate indicators**



Overview

- How do issues of health relate – in the understandings of policy-makers, practitioners and migrants themselves – to broader conceptualizations of migrant processes and outcomes, such as ‘integration’?
- Illustrated through reflection on two very distinctive projects:
 - **Indicators of Integration, UK Home Office, 2002-2004** (measuring policy and practice impact on integration of refugees settling in UK during ‘dispersal’ policy era)
 - SEFAFU, Christian Childrens Fund/Child Fund International, 2006-2008 (measuring project impact on process of reintegration of returning abductees following civil conflict in Sierra Leone)
- Common challenges:
 - conceptualization of (re)integration process
 - identification of appropriate indicators

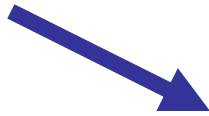




- **‘There is no single, generally accepted definition, theory or model of immigrant and refugee integration. The concept continues to be controversial and hotly debated’ (Castles et al. 2001)**

- **‘integration is a chaotic concept: a word used by many but understood differently by most’ (Robinson 1998)**

What is
potentially
relevant?



**Indicators of
Integration
Framework**

- Economic Integration
 - Employment & Income-Generation
 - Vocational Training and Further Education
- Social integration
 - Housing
 - Health and Social Services
 - Education
- Cultural Integration
 - Refugee Participation
 - Relations with Host Communities
- Political Integration
 - Legal Status and Rights
 - Political Representation
 - Law and Order



What is
conceptually
meaningful?

What is
potentially
relevant?

**Indicators of
Integration
Framework**

Public Outcomes

Public Outcomes



Policy Framework

Public Outcomes

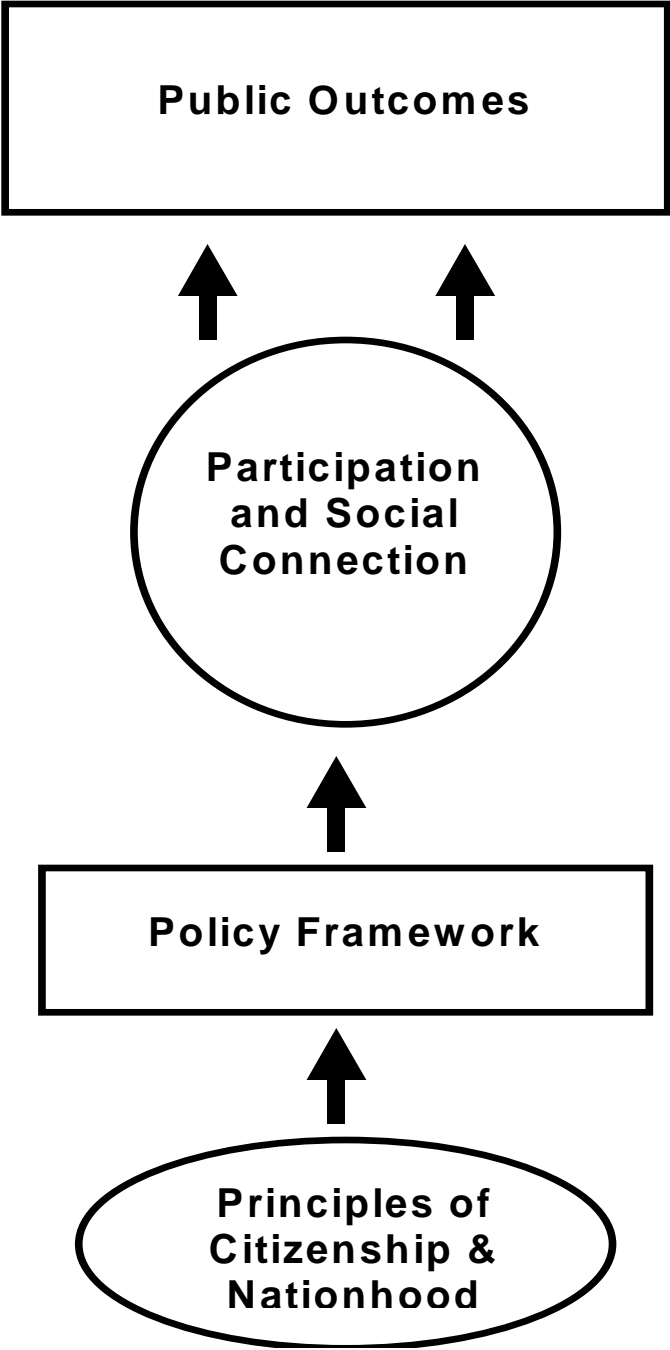


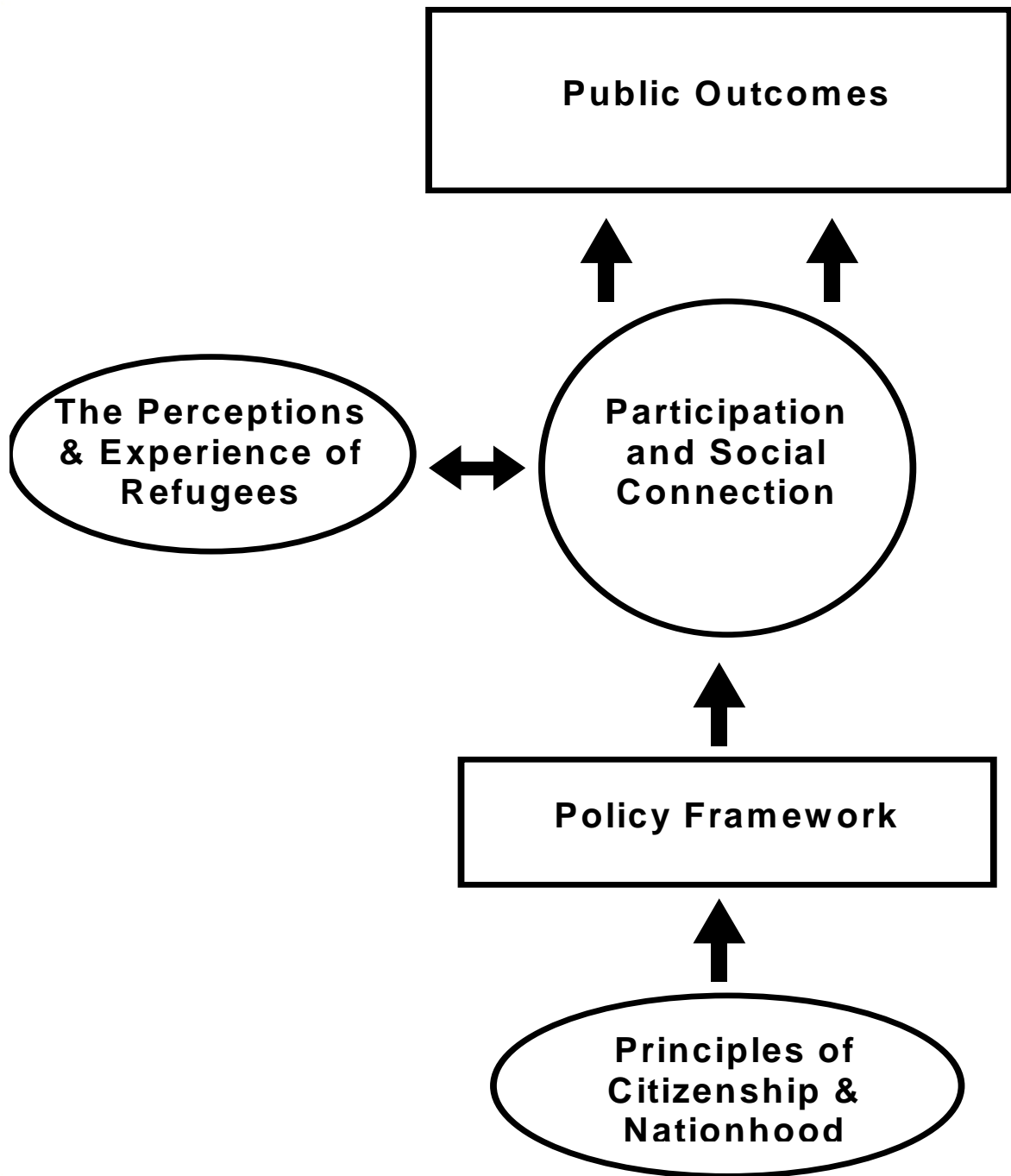
Policy Framework

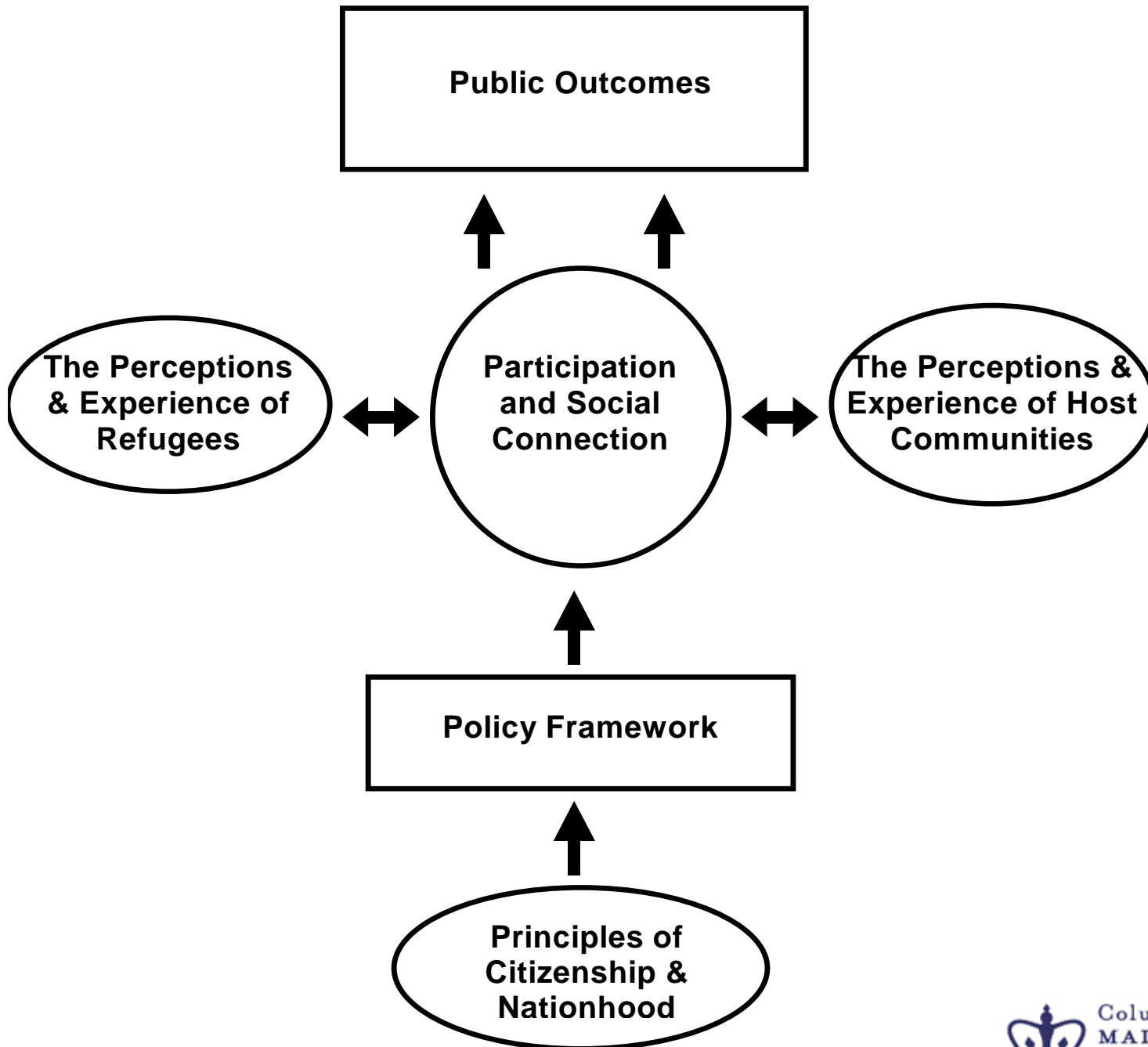


**Principles of
Citizenship &
Nationhood**

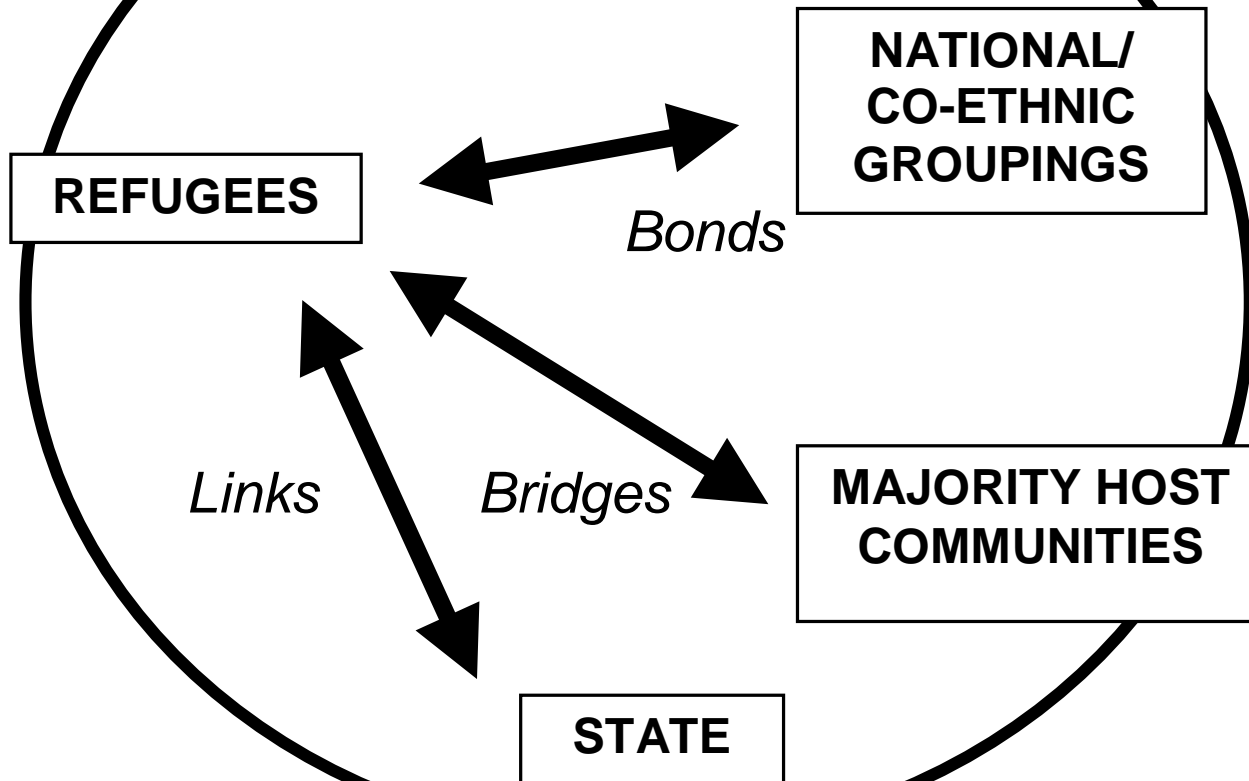








Participation & Social Connection



What is
conceptually
meaningful?

What is relevant
for refugees and
local communities?

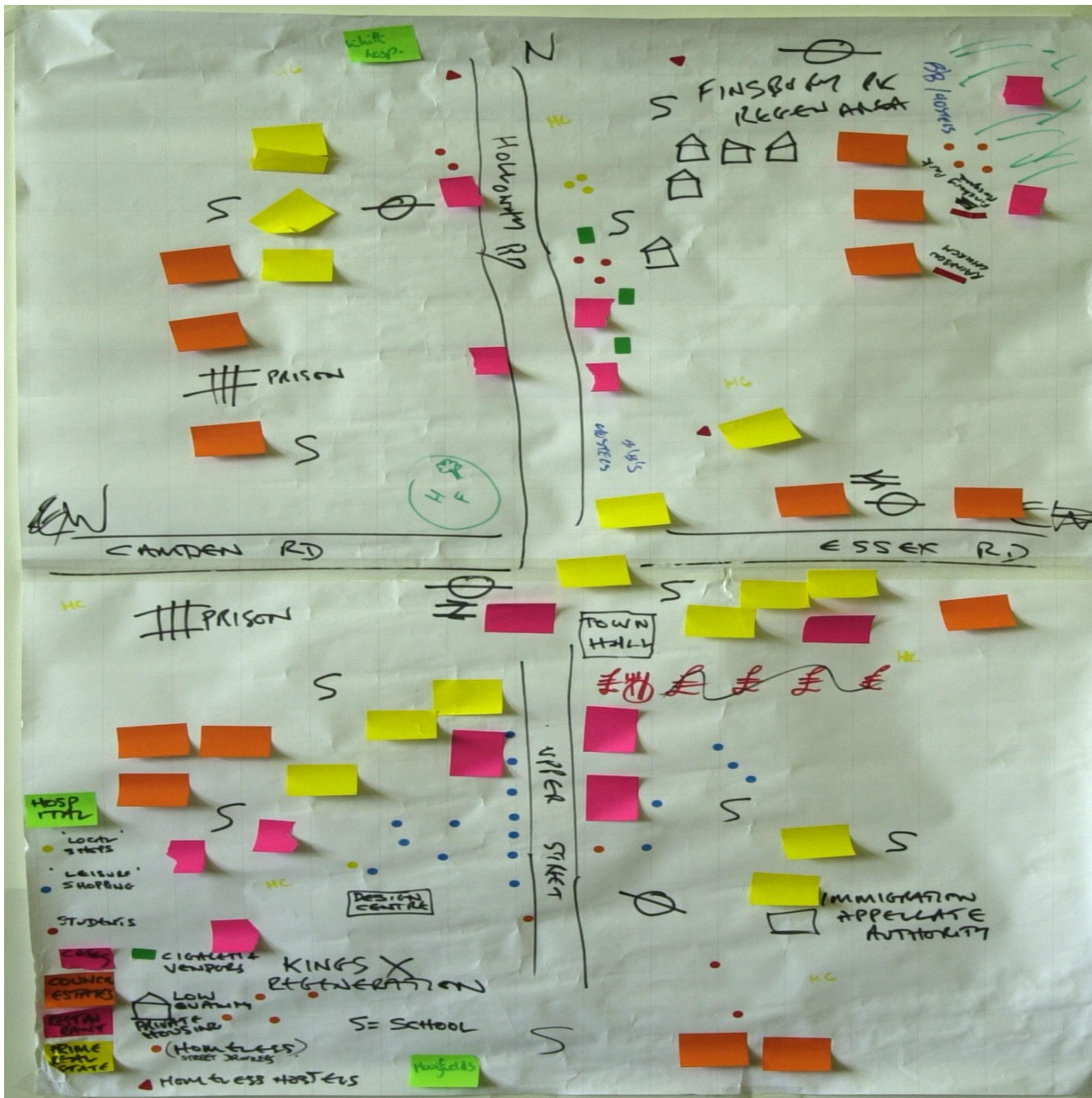
What is
potentially
relevant?

**Indicators of
Integration
Framework**



***qualitative study:
the experience of integration***

- **sites focus of significant refugee settlement (self-settlement [Islington] or dispersal-led [Glasgow])**
- **preliminary social mapping exercise through CF/ERF projects**
- **60 in-depth interviews reflecting diversity of the neighbourhood**



What is conceptually meaningful?

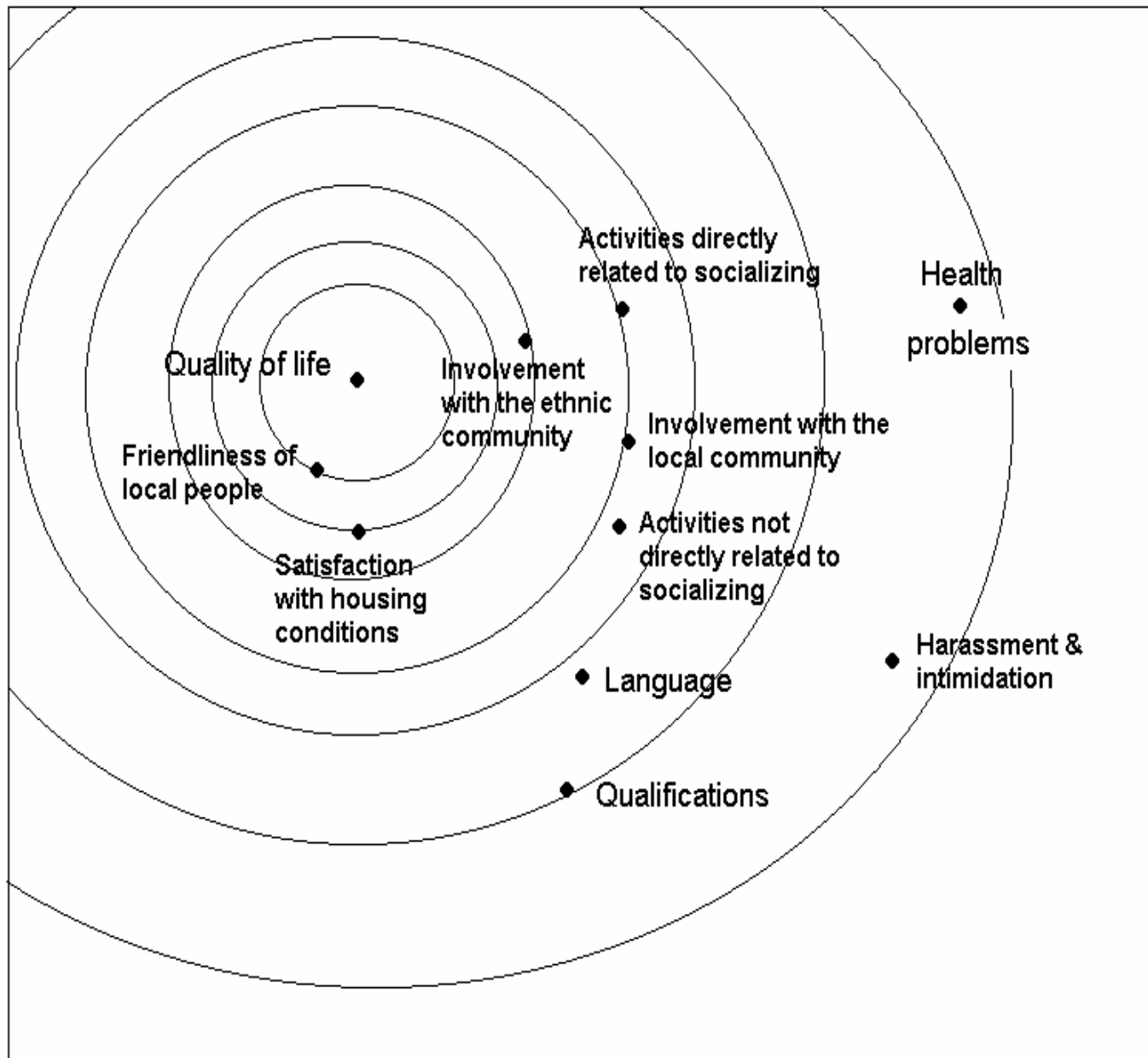
What is relevant for refugees and local communities?

What is potentially relevant?

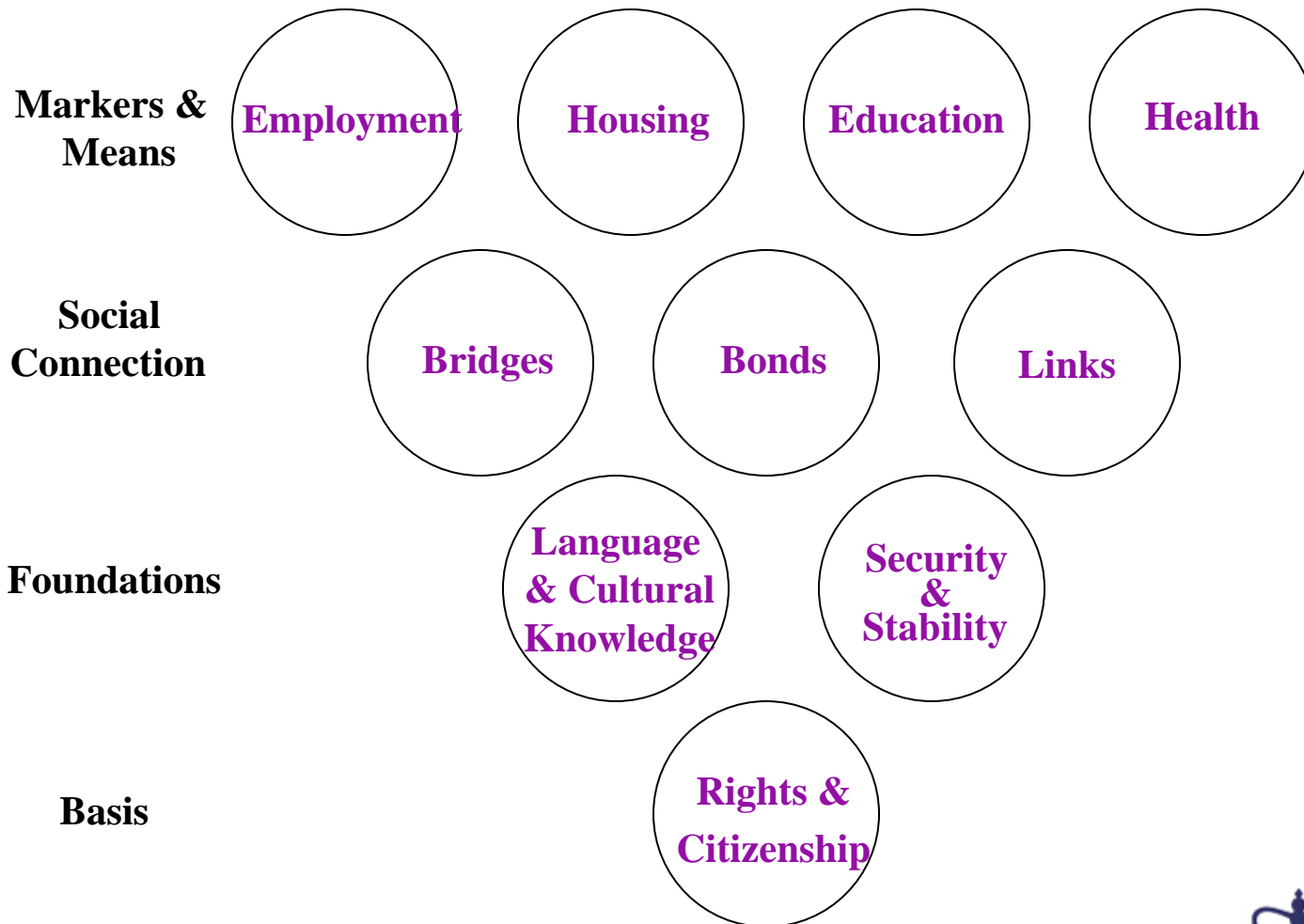
What indicators group together?

Indicators of Integration Framework





key domains of integration?



Overview

- How do issues of health relate – in the understandings of policy-makers, practitioners and migrants themselves – to broader conceptualizations of migrant processes and outcomes, such as ‘integration’?
- Illustrated through reflection on two very distinctive projects:
 - Indicators of Integration, UK Home Office, 2002-2004 (measuring policy and practice impact on integration of refugees settling in UK during ‘dispersal’ policy era)
 - **SEFAFU, Christian Childrens Fund/Child Fund International, 2006-2008 (measuring project impact on process of reintegration of returning abductees following civil conflict in Sierra Leone)**
- Common challenges:
 - conceptualization of (re)integration process
 - identification of appropriate indicators





qualitative study:

identifying local indicators of successful 'reintegration' following return

- **Used Participative Ranking Methodology (PRM) to elicit and prioritise indicators**
- **16 PRM discussions involving 166 formerly abducted girls across Koinadugu, Bombali and Port Loko**
- **Emerging indicators:**
 - **Marriage**
 - **Community involvement**
 - ***Bondo* inclusion**
 - **Drug cessation**
 - **“Steady head”**



Community Constructed Timeline

Dry 2000

UN helicopter blows roof off the school building

March 2002

Construction of the Nyfrando bridge is completed

July 2003

Woman beat a lizard in the kasava leaves and kills 7 members of her family

March 2004

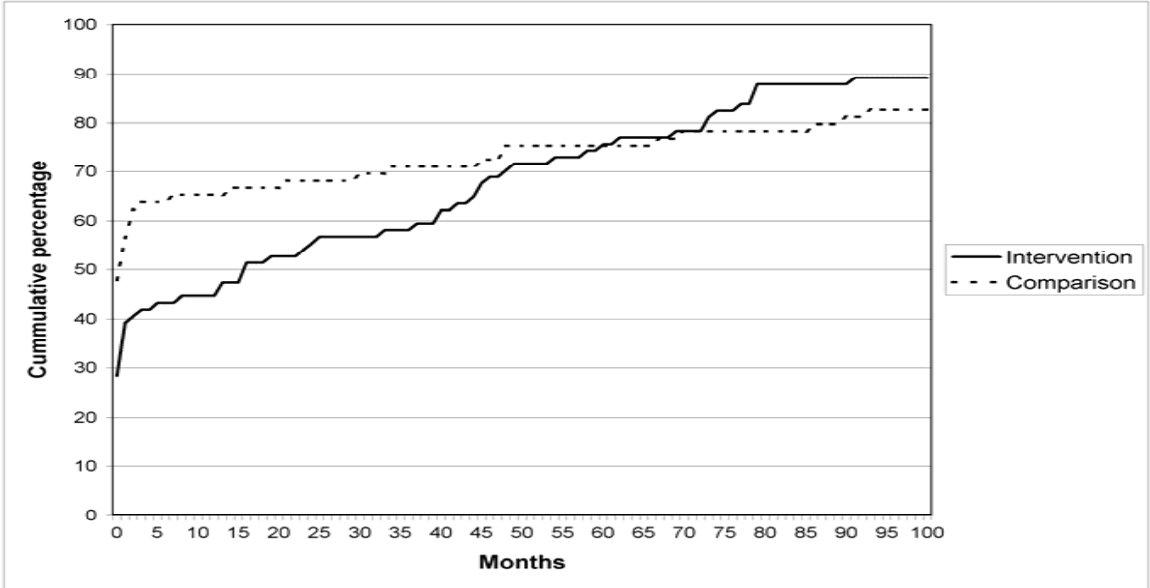
CARE builds latrines in the village

June 2005

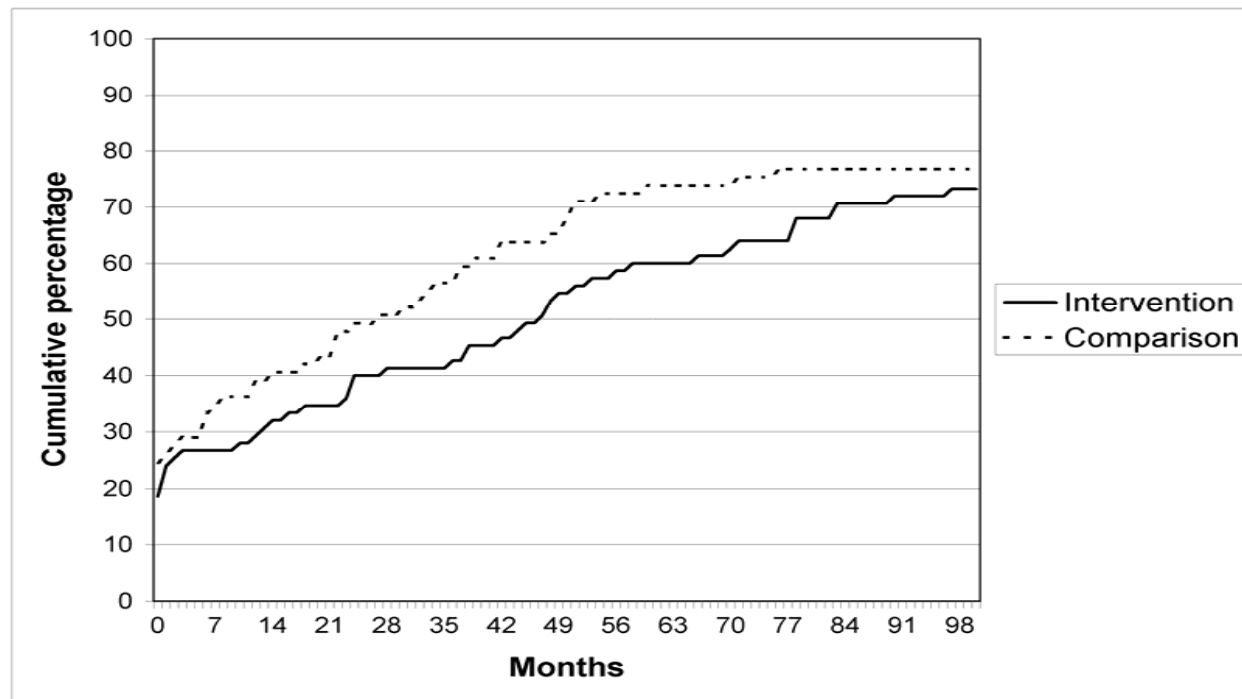
A feud between the Fula's and the Limba's result in the death of a local farmer at the hands of the herder whose cattle was eating the farmer's crop



Time to community acceptance after return from bush



Time to marriage after return from bush



Ratings of quality of marriage after return from bush

	Provision of clothes by husband	Provision of food by husband	No beating by husband	Provision of medicine by husband	'Good marriage'
Intervention Group (N=52)	42.3%	86.5%	42.3%	75.0%	50.0%
Comparison Group (N=49)	22.4%	79.6%	44.9%	51.0%	44.9%
p-value	0.04	0.43	0.84	0.01	0.69

Matched Analysis

Identifying girls who had not attained each outcome by the time intervention began & finding 'match' from comparison communities

	SEFAFU	Comparison	Odds ratio	p
Marriage	7/25	10/25	0.7	0.55
<i>Bondo</i>	15/20	7/20	2.14	<0.05
Community	19/20	9/20	2.11	<0.002
'Steady head'	13/14	4/14	3.25	<0.002



Conclusions

- **Common challenges:**
 - conceptualization of (re)integration process
 - identification of appropriate indicators

Value of 'mid-level theory'

Place of structured, rigorous qualitative enquiry to establish grounded concepts and suggest valid quantitative measures

- **How do issues of health relate – in the understandings of policy-makers, practitioners and migrants themselves – to broader conceptualizations of migrant processes and outcomes, such as 'integration'?**

Health is best seen not a discrete domain of migrant experience but as inextricably bound up with broader social processes e.g. as a 'marker' and 'means' of integration